

# Chula Vista Missing and Non-Standard Infrastructure

## Part II:

❖Missing and Non-Standard Street  
Infrastructure

❖Utility Wire Undergrounding



## Total Infrastructure Need

Infrastructure Component	Total Funding Need (2006 Dollars, Rounded)	2007 Dollars
Pavement	\$ 192,000,000 over 10 years \$ 19,200,000 per year	\$197,900,000 \$19,790,000
Drainage		
Priority 1 Tier (Funded Projects)	\$ 28,800,000 (\$ 4,400,000)	\$29,700,000
Subtotal Priority 1 Tier	\$ 24,400,000	\$25,200,000
Priority 2 –4 Tiers	\$ 6,300,000 to \$8,900,000	\$6,500,000 to \$9,200,000
Priority 5 Tier	\$ 2,060,000 to \$4,300,000 <sup>[1]</sup>	\$2,120,000 to \$4,430,000
Storm Drain (Corrugated Metal Pipe)	\$ 29,000,000	\$29,900,000
Missing Infrastructure	\$ 139,400,000	\$143,700,000
Utility Wire Undergrounding	\$275,000,000	\$283,500,000


[1] These estimates are very general. Scopes of work have not been prepared.

## Drainage Priorities

- ❖ Approval of five-tier Priority List at April 2007 Workshop
- ❖ Emerson St. Drainage project recently completed
- ❖ Ongoing CMP Replacement Project
- ❖ Bonita and Long Canyon listed as Tier 1 projects in Regional Water Management Plan
- ❖ Telegraph Canyon Channel improvements at Third Ave. and L Street under study
- ❖ Second Ave. Drainage project recently completed


### Priority One Drainage Projects

LOCATION Sorted in ascending order by basin name	Preliminary Cost Estimate
Bonita Basin - Bonita Road and Allen School Road.	\$500,000
Bonita Basin - Canyon from Terra Nova Drive to Bonita Road	\$3,900,000
Central Basin - east of Second Avenue and north of H Street	\$1,500,000
	Funded:
	\$1,500,000
Central Basin - Hilltop Drive, Hilltop Drive, s/o "H" Street to Shasta Street.	\$1,800,000
Long Canyon Basin - Canyon from Corral Canyon Road and East H Street to channel.	\$4,600,000
Telegraph Canyon Basin - Country Club Drive Culvert, channel, and First Avenue culvert, and Hilltop Park upstream of First Avenue and Millan Court, and east of Hilltop Drive south of Telegraph Canyon Road	\$5,600,000
Telegraph Canyon Basin - Fourth Avenue to Third Avenue channel, and L Street culvert.	\$7,100,000
Telegraph Canyon Basin - Third Avenue & Emerson Street to 900' west; Emerson Street drainage system.	\$2,900,000
	Funded:
	\$2,900,000
Telegraph Canyon Basin - Moss Street and Fifth Avenue	\$900,000
<b>TOTAL: \$28,800,000</b> <b>FUNDED PROJECTS: \$4,400,000</b> <b>FUNDING NEEDED: \$24,400,000</b>	



## Pavement Preservation

- ❖ Pavement Management System endorsed at April 2007 workshop
- ❖ Pavement Management is based on using most cost-effective rehabilitation strategies Citywide
- ❖ Pavement transfer of \$11.5 million into Pavement Management adopted on 5/1/07
- ❖ \$1.8 million and \$3.2 million seal contracts awarded in Aug.-Sept. 2007
- ❖ \$450,000 digout contract awarded Jan. 2008



## Workshop Goals

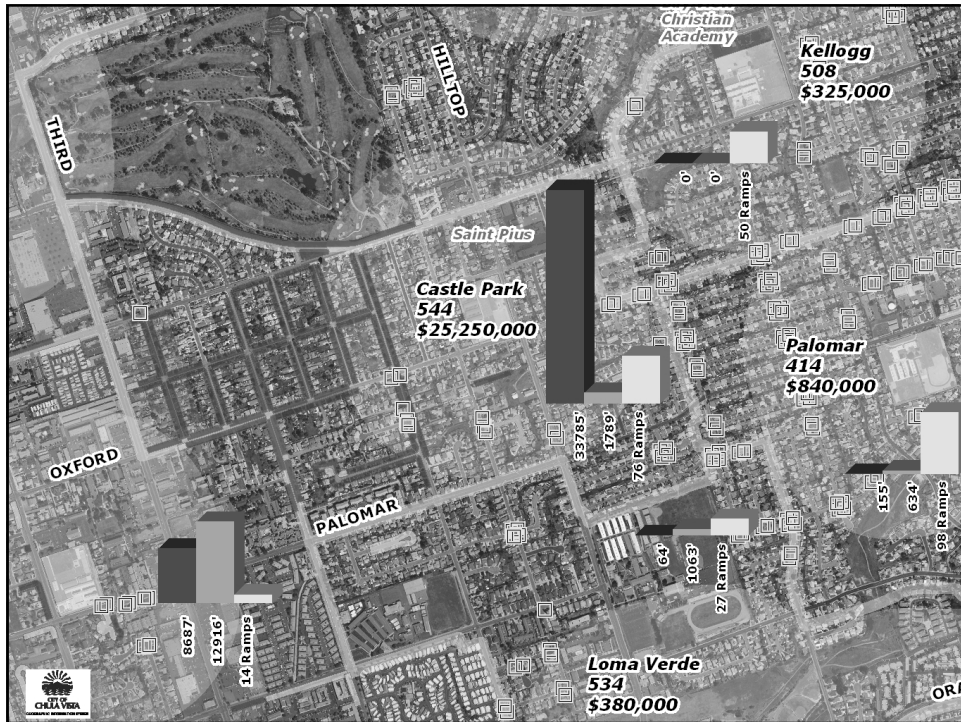
- ❖ To present the second status report on the infrastructure management program, highlighting missing, non-standard, and degraded street infrastructure and utility wire undergrounding
- ❖ To obtain approval of the ADA Curb Cuts Priority List
- ❖ To elicit discussion on priorities among competing infrastructure needs
- ❖ To elicit discussion on potential revenue sources

## Missing Street Infrastructure

- ❖ Pedestrian ramps (curb cuts)
- ❖ Curb, gutter and sidewalk on arterials
- ❖ Curb, gutter and sidewalk on other local streets
- ❖ Bicycle infrastructure








## Pedestrian Ramps (Curb Cuts)

- ❖ Required by Americans with Disabilities Act (ADA) where there are existing sidewalks
- ❖ Prioritized 914 missing ramps by proximity to:
  - ❖ Government services facilities
  - ❖ Public and private schools
  - ❖ Mass transit access points and bus stops
  - ❖ Places of public accommodation and employment
  - ❖ Residents' requests

Missing Improvements									
School Name	Total Costs Per School	Ramp Cost Per School @ \$6,500 ea	Missing Ramps	All Curb and Sidewalk Cost Per School	Curb/Sidewalk @ \$725/Linear foot	Curb & Sidewalk Length	Sidewalk @ \$150/Linear foot	Sidewalk Length	Total Length (feet)
ALLEN	\$6,401,658	\$143,000	22	\$6,258,658	\$2,007,981	2,770	\$4,250,677	28,338	31,107
CASILLAS	\$602,703	\$208,000	32	\$394,703			\$394,703	2,631	2,631
CASTLE PARK	\$25,256,657	\$494,000	76	\$24,762,657	\$24,494,270	33,785	\$268,387	1,789	35,574
CHULA VISTA HILLS	\$620,287	\$162,500	25	\$457,787			\$457,787	3,052	3,052
CLEAR VIEW	\$904,036	\$143,000	22	\$761,036			\$761,036	5,074	5,074
COOK	\$2,814,274	\$143,000	22	\$2,671,274	\$2,589,165	3,571	\$82,109	547	4,119
DISCOVERY	\$97,500	\$97,500	15						
EASTLAKE	\$130,000	\$130,000	20						
FEASTER	\$1,436,566	\$221,000	34	\$1,215,566	\$172,731	238	\$1,042,834	6,952	7,190
GREG ROGERS	\$328,263	\$227,500	35	\$98,763			\$98,763	658	658
HALECREST	\$513,500	\$513,500	79						
HARBORSIDE	\$24,782,823	\$312,000	48	\$24,470,823	\$23,550,771	32,484	\$920,052	6,134	38,618
HILLTOP DRIVE	\$2,121,508	\$617,500	95	\$1,504,008	\$186,115	257	\$1,317,893	8,788	9,043
KELLOGG	\$325,000	\$325,000	50						
LAUDERBACH	\$8,326,489	\$91,000	14	\$8,235,489	\$6,298,029	8,687	\$1,937,460	12,916	21,603
LOMA VERDE	\$381,530	\$175,500	27	\$206,030	\$46,596	64	\$159,435	1,063	1,127
MARSHALL	\$6,500	\$6,500	1						
MONTGOMERY	\$4,378,125	\$110,500	17	\$4,267,625	\$3,462,707	4,776	\$804,919	5,366	10,142
MUELLER	\$3,438,196	\$572,000	88	\$2,866,196	\$1,017,116	1,403	\$1,849,080	12,327	13,730
OLYMPIC VIEW	\$13,000	\$13,000	2						
OTAY	\$12,282,930	\$520,000	80	\$11,762,930	\$11,170,977	15,408	\$591,953	3,946	19,355
PALOMAR	\$844,573	\$637,000	98	\$207,573	\$112,532	155	\$95,041	634	789
PARKVIEW	\$299,000	\$299,000	46						
RICE	\$5,789,797	\$279,500	43	\$5,510,297	\$4,480,527	6,180	\$1,029,771	6,865	13,045
ROHR	\$14,337,943	\$344,500	53	\$13,993,443	\$13,902,701	19,176	\$90,741	605	19,781
ROSEBANK	\$11,019,869	\$364,000	56	\$10,655,869	\$7,068,895	9,750	\$3,586,974	23,913	33,663
TIFFANY	\$305,500	\$305,500	47						
VALLE LINDO	\$10,778,013	\$286,000	44	\$10,492,013	\$6,274,785	8,655	\$4,217,228	28,115	36,770
VISTA SQUARE	\$799,274	\$208,000	32	\$591,274	\$258,192	356	\$333,082	2,221	2,577
<b>GRAND TOTAL</b>	<b>\$139,333,516</b>	<b>\$7,949,500</b>	<b>1,223</b>	<b>\$131,384,016</b>	<b>\$107,094,091</b>	<b>147,716</b>	<b>\$24,289,925</b>	<b>161,933</b>	<b>309,649</b>
					Missing Curb/Gutter & Sidewalk:		147,716 LF	\$107,094,091	
					Missing Sidewalk:		161,933 LF	\$24,289,925	
					<b>TOTAL:</b>		<b>309,649 LF</b>	<b>\$131,384,016</b>	
					Missing Ramps:		1,223 EA	\$7,949,500	
					<b>GRAND TOTAL:</b>			<b>\$139,333,516</b>	



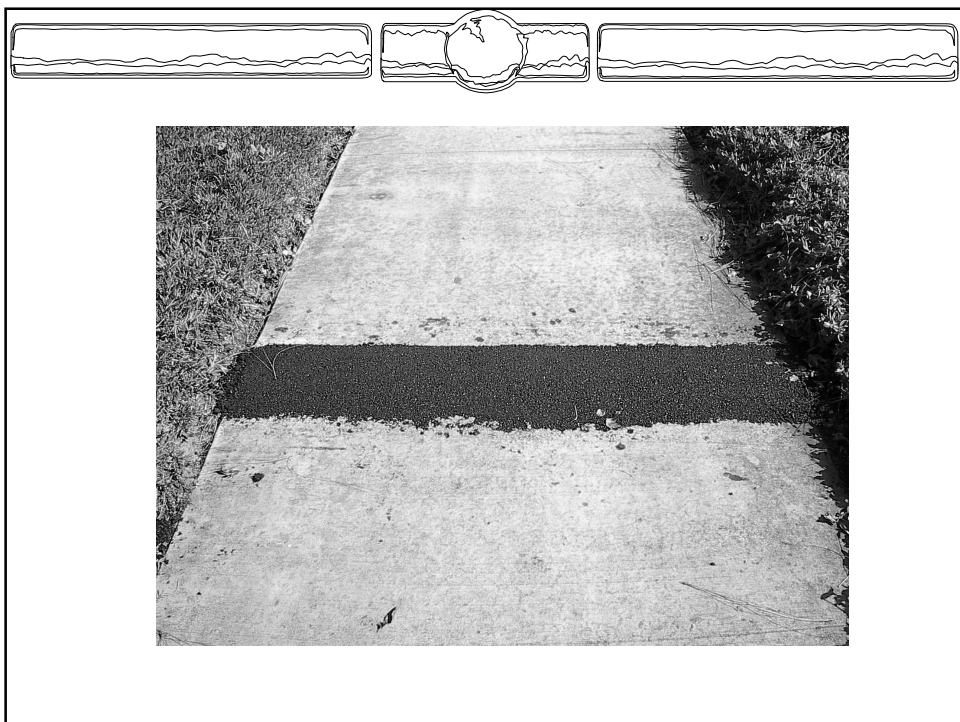
## Curb, Gutter and Sidewalk

- ❖ Missing Curb, Gutter and Sidewalk have been identified in 29 elementary school boundary areas
- ❖ Total estimated cost approximately \$140 million, not including drainage
- ❖ Total est. missing curb, gutter and sidewalk: 147,716 feet
- ❖ Total est. missing sidewalk only: 161,933 feet
- ❖ Total estimated 1223 pedestrian ramps (includes 914 ramps with existing sidewalk)

## Non-Standard & Degraded Infrastructure

- ❖ Pedestrian ramps: constructed under older standards
- ❖ Sidewalks: narrow, gravel or asphalt material, cracking
- ❖ Cross-gutters: condition and/ or drivability





## Cross-Gutters

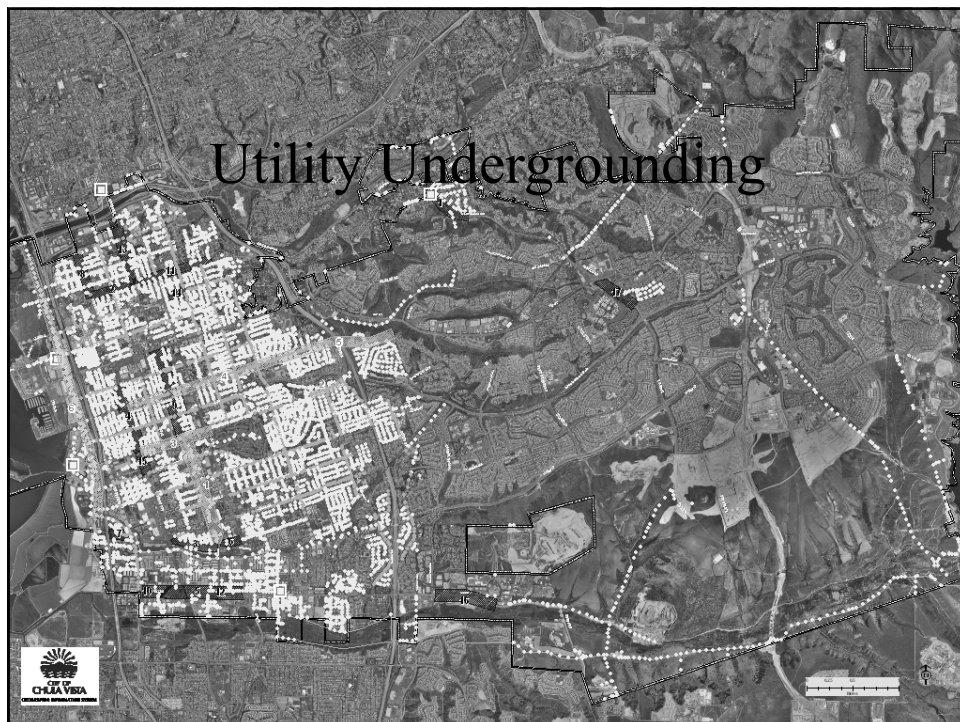
- ❖ Evaluated based on degree of drivability
- ❖ 87 locations evaluated, including citizens' requests and all facilities crossing arterials or collectors
- ❖ Criteria include: street classification, traffic volume, slope and presence of stop sign
- ❖ Location near pedestrian access is also a consideration
- ❖ Cost can vary significantly from site to site

## Typical Cross-Gutter



## Infrastructure Planning Efforts

- ❖ 2005 Bicycle Master Plan
  - ❖ Recommends 18 CIP projects, \$4.25 M est. cost
- ❖ Pedestrian Master Plan
  - ❖ Consultant selection in process, est. award June 2008
- ❖ Kids Walk and Bike to School Program
  - ❖ Community meetings and walking audits for 36 schools
- ❖ Western Chula Vista Transportation DIF



## Utility Undergrounding Status

- ❖ 16 undergrounding districts completed during the past 15 years
- ❖ Districts in process:
  - ❖ Bayfront in construction
  - ❖ Fourth Ave. from L Street to Orange Ave. in construction
  - ❖ L Street from Monserate Ave. to Nacion Ave. in design

